

OMNeT++

Installation Guide

Version 4.6

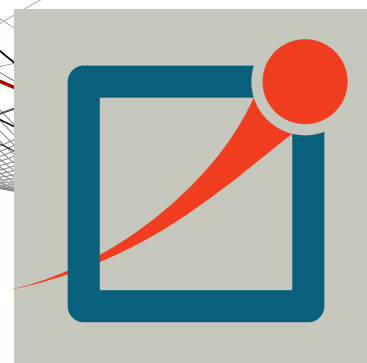


Table of Contents

1. General Information	1
2. Windows	2
3. Mac OS X	6
4. Linux	12
5. Ubuntu	18
6. Fedora 18	22
7. Red Hat	24
8. OpenSUSE	26
9. Generic Unix	28
10. Build Options	35

Chapter 1. General Information

1.1. Introduction

This document describes how to install OMNeT++ on various platforms. One chapter is dedicated to each operating system.

1.2. Supported Platforms

OMNeT++ has been tested and is supported on the following operating systems:

- Windows 7, 8 and XP
- Mac OS X 10.7,10.8 and 10.9
- Linux distributions covered in this Installation Guide

The Simulation IDE can be used on the following platforms:

- Linux x86 32/64-bit
- Windows 7, 8 and XP
- Mac OS X 10.7,10.8 and 10.9



Simulations can be run practically on any unix-like environment with a decent and fairly up-to-date C++ compiler, for example gcc 4.x. Certain OMNeT++ features (Tkenv, parallel simulation, XML support, etc.) depend on the availability of external libraries (Tcl/Tk, MPI, LibXML or Expat, etc.)

IDE platforms are restricted because the IDE relies on a native shared library, which we compile for the above platforms and distribute in binary form for convenience.

Chapter 2. Windows

2.1. Supported Windows Versions

The supported Windows versions are the Intel 32-bit versions of Windows XP, and later versions such as Windows 7 and 8.



64-bit Windows versions are also supported, but be aware that binaries bundled with OMNeT++ are 32-bit ones, and simulations will also be compiled in 32-bit mode.

2.2. Installing OMNeT++

Download the OMNeT++ source code from <http://omnetpp.org>. Make sure you select the Windows-specific archive, named `omnetpp-4.6-src-windows.zip`.

The package is nearly self-contained: in addition to OMNeT++ files it includes a C++ compiler, a command-line build environment, and all libraries and programs required by OMNeT++.

Copy the OMNeT++ archive to the directory where you want to install it. Choose a directory whose full path **does not contain any space**; for example, do not put OMNeT++ under *Program Files*.

Extract the zip file. To do so, right-click the zip file in Windows Explorer, and select *Extract All* from the menu. You can also use external programs like Winzip or 7zip. Rename the resulting directory to `omnetpp-4.6`.

When you look into the new `omnetpp-4.6` directory, should see directories named `doc`, `images`, `include`, `tools`, etc., and files named `mingwenv.cmd`, `configure`, `Makefile`, and others.

2.3. Configuring and Building OMNeT++

Start `mingwenv.cmd` in the `omnetpp-4.6` directory by double-clicking it in Windows Explorer. It will bring up a console with the MSYS *bash* shell, where the path is already set to include the `omnetpp-4.6/bin` directory.



If you want to start simulations from outside the shell as well (for example from Explorer), you need to add OMNeT++'s `bin` directory to the path; instructions are provided later.

First, check the contents of the `configure.user` file to make sure it contains the settings you need. In most cases you don't need to change anything.

```
notepad configure.user
```

Then enter the following commands:

```
$ ./configure
$ make
```

The build process will create both debug and release binaries.

2.4. Verifying the Installation

You should now test all samples and check they run correctly. As an example, the *dyna* example is started by entering the following commands:

```
$ cd samples/dyna
$ ./dyna
```

By default, the samples will run using the graphical Tkenv environment. You should see GUI windows and dialogs.

2.5. Starting the IDE

OMNeT++ comes with an Eclipse-based Simulation IDE. You should be able to start the IDE by typing:

```
$ omnetpp
```

We recommend that you create a shortcut for starting the IDE. To do so, locate the `omnetpp.exe` program in the `omnetpp-4.6/ide` directory in Windows Explorer, right-click it, and choose *Send To > Desktop (create shortcut)* from the menu. On Windows 7, you can right-click the taskbar icon while the IDE is running, and select *Pin this program to taskbar* from the context menu.

When you try to build a project in the IDE, you may get the following warning message:

```
Toolchain "." is not supported on this platform or installation. Please
go to the Project menu, and activate a different build configuration. (You
may need to switch to the C/C++ perspective first, so that the required
menu items appear in the Project menu.)
```

If you encounter this message, choose *Project > Properties > C/C++ Build > Tool Chain Editor > Current toolchain > GCC for OMNeT++*.

2.6. Environment Variables

If you want to start OMNeT++ simulations outside the shell as well (for example from Explorer), you need to add OMNeT++'s `bin` directory to the path.

First, open the *Environment Variables* dialog.

- On Windows XP and Vista: Right-click *My Computer*, and choose *Properties > Advanced > Environment variables*.
- On Windows 7: Click the Start button, then start typing `environment variables` into the search box. Choose *Edit environment variables for your account* when it appears in the list. The dialog comes up.

In the dialog, select `path` or `PATH` in the list, click *Edit*. Append `";<omnetpp-dir>\bin"` to the value (without quotes), where `<omnetpp-dir>` is the name of the OMNeT++ root directory (for example `C:\omnetpp-4.6`). Hit Enter to accept.

You need to close and re-open any command windows for the changes to take effect in them.

2.7. Reconfiguring the Libraries

If you need to recompile the OMNeT++ components with different flags (e.g. different optimization), then change the top-level OMNeT++ directory, edit `configure.user` accordingly, then type:

```
$ ./configure
$ make clean
$ make
```

If you want to recompile just a single library, then change to the directory of the library (e.g. `cd src/sim`) and type:

```
$ make clean
$ make
```

By default, libraries are compiled in both debug and release mode. If you want to make release or debug builds only, use:

```
$ make MODE=release
```

or

```
$ make MODE=debug
```

By default, shared libraries will be created. If you want to build static libraries, set `SHARED_LIBS=no` in `configure.user` and re-configure your project.



The built libraries and programs are immediately copied to the `lib/` and `bin/` subdirs.

2.8. Portability Issues

OMNeT++ has been tested with the MinGW gcc compiler. The current distribution contains gcc version 4.7.

Microsoft Visual C++ is not supported in the Academic Edition.

2.9. Additional Packages

Note that Doxygen and GraphViz are already included in the OMNeT++ package, and do not need to be downloaded.

2.9.1. MPI

MPI is only needed if you would like to run parallel simulations.

There are several MPI implementations for Windows, and OMNeT++ does not mandate any specific one. We recommend DeinoMPI, which can be downloaded from <http://mpi.deino.net>.

After installing DeinoMPI, adjust the `MPI_DIR` setting in OMNeT++'s `configure.user`, and reconfigure and recompile OMNeT++:

```
$ ./configure
$ make cleanall
$ make
```



In general, if you would like to run parallel simulations, we recommend that you use Linux, OS X, or another unix-like platform.

2.9.2. PCAP

The optional WinPcap library allows simulation models to capture and transmit network packets bypassing the operating system's protocol stack. It is not used directly

by OMNeT++, but OMNeT++ detects the necessary compiler and linker options for models in case they need it.

2.9.3. Akaroa

Akaroa 2.7.9, which is the latest version at the time of writing, does not support Windows. You may try to port it using the porting guide from the Akaroa distribution.

Chapter 3. Mac OS X

3.1. Supported Releases

This chapter provides additional information for installing OMNeT++ on Mac OS X.

The following releases are covered:

- Mac OS X 10.7 (*Lion*)
- Mac OS X 10.8 (*Mountain Lion*)
- Mac OS X 10.9 (*Mavericks*)
- Mac OS X 10.10 (*Yosemite*)

3.2. Installing the Prerequisite Packages

- Install the Java Runtime from <http://support.apple.com/kb/DL1572> , because OS X does not provide it by default. Additionally you must install the latest version of Java Runtime Environment from <http://java.com> (version 1.7 or later.)
- Install the command line developer tools for OS X from <http://developer.apple.com/downloads/index.action?Command%20Line%20Tools> (you will need a free Apple Developer Account for the download.)
- Install the quartz project from <http://xquartz.macosforge.org/>. Quartz will provide some X headers required by the simulation runtime environment.

Installing additional packages will enable more functionality in OMNeT++; see the *Additional packages* section at the end of this chapter.

3.3. Additional Steps Required on Mac OS X 10.9 or Later

The Command Line Tools package on Mac OS X 10.9 no longer contains `gcc` and `gdb`; instead it contains the Clang compiler and `lldb`. (The `gcc` and `g++` commands actually run `clang`.) OMNeT++ will use Clang automatically. However, the OMNeT++ IDE can only use `gdb` as the underlying debugger, but not `lldb`.

To be able to debug from the IDE, you have to install `gdb` from MacPorts. Alternatively, you can use XCode for debugging.

To do the former, first install MacPorts from <http://macports.org>. Then you can install `gdb`:

```
$ sudo port install gdb
```

OS X 10.9 and later requires that you sign the `ggdb` executable with a self-signed certificate (or with your own certificate, if you have one.)

Start the *Keychain Access* application. Choose *Keychain Access > Certificate Assistant > Create a Certificate...* from the menu.

Choose a name (e.g. `gdb-cert`), set *Identity Type* to *Self Signed Root*, set *Certificate Type* to *Code Signing* and select the *Let me override defaults*. Click several times on

Continue until you get to the *Specify a Location For The Certificate* screen, then set *Keychain* to *System*.

If you can't store the certificate in the *System* keychain, create it in the *Login* keychain, then export it. You can then import it into the *System* keychain.

Finally, using the context menu for the certificate, select *Get Info*, open the *Trust* item, and set *Code Signing* to *Always Trust*.

You must quit the *Keychain Access* application in order to use the certificate and restart the system.

Now sign the executable:

```
$ sudo codesign -s gdb-cert /opt/local/bin/ggdb
```

After installing the OMNeT++ IDE, you have to change the name of the executable used for debugging. Go to *Preferences > C++ > Debug > gdb* in the IDE, and change the executable name from *gdb* to *ggdb*.

3.4. Downloading and Unpacking OMNeT++

Download OMNeT++ from <http://omnetpp.org>. Make sure you select to download the generic archive, `omnetpp-4.6-src.tgz`.

Copy the archive to the directory where you want to install it. This is usually your home directory, `/Users/<you>`. Open a terminal, and extract the archive using the following command:

```
$ tar zxvf omnetpp-4.6-src.tgz
```

A subdirectory called `omnetpp-4.6` will be created, containing the simulator files.

Alternatively, you can also unpack the archive using Finder.



The Terminal can be found in the Applications / Utilities folder.

3.5. Environment Variables

OMNeT++ needs its `bin/` directory to be in the path. To add `bin/` to `PATH` temporarily (in the current shell only), change into the OMNeT++ directory and source the `setenv` script:

```
$ cd omnetpp-4.6
$ . setenv
```

To set the environment variables permanently, edit `.bashrc` in your home directory. Use your favourite text editor to edit `.bashrc`, for example `TextEdit`:

```
$ touch ~/.bashrc
$ open -e ~/.bashrc
```



`touch` is needed because `open -e` only opens existing files. Alternatively, you can use the terminal-based `pico` editor (`pico ~/.bashrc`)

Add the following line at the end of the file, then save it:

```
export PATH=$PATH:$HOME/omnetpp-4.6/bin
```

You need to close and re-open the terminal for the changes to take effect.

Alternatively, you can put the above line into `~/.bash_profile`, but then you need to log out and log in again for the changes to take effect.



If you use a shell other than the default one, *bash*, consult the man page of that shell to find out which startup file to edit, and how to set and export variables.

3.6. Configuring and Building OMNeT++

Check `configure.user` to make sure it contains the settings you need. In most cases you don't need to change anything in it.

In the top-level OMNeT++ directory, type:

```
$ ./configure
```

The `configure` script detects installed software and configuration of your system. It writes the results into the `Makefile.inc` file, which will be read by the makefiles during the build process.

Normally, the `configure` script needs to be running under the graphical environment in order to test for `wish`, the Tcl/Tk shell. If you are logged in via an ssh session or you want to compile OMNeT++ without Tcl/Tk, use the command

```
$ NO_TCL=1 ./configure
```

instead of plain `./configure`.



If there is an error during `configure`, the output may give hints about what went wrong. Scroll up to see the messages. (You may need to increase the scrollbar buffer size of the terminal and re-run `./configure`.) The script also writes a very detailed log of its operation into `config.log` to help track down errors. Since `config.log` is very long, it is recommended that you open it in an editor and search for phrases like *error* or the name of the package associated with the problem.

When `./configure` has finished, you can compile OMNeT++. Type in the terminal:

```
$ make
```



To take advantage of multiple processor cores, add the `-j4` option to the `make` command line.



The build process will not write anything outside its directory, so no special privileges are needed.



The `make` command will seemingly compile everything twice. This is because both debug and optimized versions of the libraries are built. If you only want to build one set of the libraries, specify `MODE=debug` or `MODE=release`:

```
$ make MODE=release
```

3.7. Verifying the Installation

You can now verify that the sample simulations run correctly. For example, the `dyna` simulation is started by entering the following commands:

```
$ cd samples/dyna
$ ./dyna
```

By default, the samples will run using the Tcl/Tk environment. You should see nice gui windows and dialogs.

3.8. Starting the IDE

OMNeT++ comes with an Eclipse-based Simulation IDE. On Mac OS X 10.7 (Lion) or later, the Java Runtime must be installed (see prerequisites) before you can use the IDE. Start the IDE by typing:

```
$ omnetpp
```

If you would like to be able to launch the IDE via Applications, the Dock or a desktop shortcut, do the following: open the `omnetpp-4.6` folder in Finder, go into the `ide` subfolder, create an alias for the `omnetpp` program there (right-click, *Make Alias*), and drag the new alias into the Applications folder, onto the Dock, or onto the desktop.

Alternatively, run one or both of the commands below:

```
$ make install-menu-item
$ make install-desktop-icon
```

which will do roughly the same.

3.9. Using the IDE

When you try to build a project in the IDE, you may get the following warning message:

```
Toolchain "..." is not supported on this platform or installation. Please
go to the Project menu, and activate a different build configuration. (You
may need to switch to the C/C++ perspective first, so that the required
menu items appear in the Project menu.)
```

If you encounter this message, choose *Project > Properties > C/C++ Build > Tool Chain Editor > Current toolchain > GCC for OMNeT++*.

The IDE is documented in detail in the *User Guide*.

3.10. Reconfiguring the Libraries

If you need to recompile the OMNeT++ components with different flags (e.g. different optimization), then change the top-level OMNeT++ directory, edit `configure.user` accordingly, then type:

```
$ ./configure
$ make clean
$ make
```



To take advantage of multiple processor cores, add the `-j2` option to the `make` command line.

If you want to recompile just a single library, then change to the directory of the library (e.g. `cd src/sim`) and type:

```
$ make clean
$ make
```

By default, libraries are compiled in both debug and release mode. If you want to make release or debug builds only, use:

```
$ make MODE=release
```

or

```
$ make MODE=debug
```

By default, shared libraries will be created. If you want to build static libraries, set `SHARED_LIBS=no` in `configure.user` and re-configure your project.



The built libraries and programs are immediately copied to the `lib/` and `bin/` subdirectories.



The Tcl/Tk environment uses the native Aqua version of Tcl/Tk, so you will see native widgets. However, due to problems in the Tk/Aqua port, you may experience minor UI quirks. We are aware of these problems, and are working on the solution.

3.11. Additional Packages

3.11.1. OpenMPI

OS X does not come with OpenMPI, so you must install it manually. Download it from <http://open-mpi.org> and follow the installation instructions. Alternatively, you can install it from the MacPorts repo by typing `sudo port install openmpi`. In this case, you have to manually set the `MPI_CFLAGS` and `MPI_LIBS` variables in `configure.user` and re-run `./configure`. Please note that we do not provide support for OpenMPI installed from the MacPorts repository.



MacPorts is a repository of several open source packages for Mac OS X. Using MacPorts packages may save you some manual work. You can install MacPorts from <http://www.macports.org>.

3.11.2. GraphViz

GraphViz is needed if you want to have diagrams in HTML documentation that you generate from NED files in the IDE (*Generate NED Documentation...* item in the project context menu).

Download and install the GraphViz OS X binaries from <http://www.pixelglow.com/graphviz/download/>. Download the latest, version 2.x package; at the time of writing, the link is at the top of the page.

Alternatively, you can install it from the MacPorts project by typing `sudo port install graphviz`.

After installation, make sure that the `dot` program is available from the command line. Open a terminal, and type

```
$ dot -V
```

Note the capital *V*. The command should normally work out of the box. If you get the *"command not found"* error, you need to put `dot` into the path. Find the `dot` program in the GraphViz installation directory, and soft link it into `/usr/local/bin` (`sudo ln -s <path>/dot /usr/local/bin`).

3.11.3. Doxygen

Doxygen is needed if you want to generate documentation for C++ code, as part of the HTML documentation that you generate from NED files in the IDE (*Generate NED Documentation...* item in the project context menu).

Download the Doxygen OS X binaries from the Doxygen web site's download page, <http://www.stack.nl/~dimitri/doxygen/download.html>, and install it.

Alternatively, you can install it from the MacPorts project by typing `sudo port install doxygen`.

After installation, ensure that the `doxygen` program is available from the command line. Open a terminal, and type

```
$ doxygen
```

If you get the "*command not found*" error, you need to put `doxygen` into the path. Enter into a terminal:

```
$ cd /Applications/Doxygen.app/Contents/Resources/  
$ sudo ln -s doxygen doxytags /usr/local/bin
```

3.11.4. Akaroa

Akaroa 2.7.9, which is the latest version at the time of writing, does not support Mac OS X. You may try to port it using the porting guide from the Akaroa distribution.

Chapter 4. Linux

4.1. Supported Linux Distributions

This chapter provides instructions for installing OMNeT++ on selected Linux distributions:

- Ubuntu 12.04 LTS, 13.04
- Fedora Core 18
- Red Hat Enterprise Linux Desktop Workstation 6.4
- OpenSUSE 12.3

This chapter describes the overall process. Distro-specific information, such as how to install the prerequisite packages, are covered by distro-specific chapters.



If your Linux distribution is not listed above, you still may be able to use some distro-specific instructions in this Guide.

Ubuntu derivatives (Ubuntu instructions may apply):

- Kubuntu, Xubuntu, Edubuntu, ...
- Linux Mint

Some Debian-based distros (Ubuntu instructions may apply, as Ubuntu itself is based on Debian):

- Knoppix and derivatives
- Mepis

Some Fedora-based distros (Fedora instructions may apply):

- Simplis
- Eeedora

4.2. Installing the Prerequisite Packages

OMNeT++ requires several packages to be installed on the computer. These packages include the C++ compiler (gcc), the Java runtime, and several other libraries and programs. These packages can be installed from the software repositories of your Linux distribution.

See the chapter specific to your Linux distribution for instructions on installing the packages needed by OMNeT++.

Generally, you will need superuser permissions to install packages.

Not all packages are available from software repositories; some (optional) ones need to be downloaded separately from their web sites, and installed manually. See the section *Additional Packages* later in this chapter.

4.3. Downloading and Unpacking

Download OMNeT++ from <http://omnetpp.org>. Make sure you select to download the generic archive, `omnetpp-4.6-src.tgz`.

Copy the archive to the directory where you want to install it. This is usually your home directory, `/home/<you>`. Open a terminal, and extract the archive using the following command:

```
$ tar xvfz omnetpp-4.6-src.tgz
```

This will create an `omnetpp-4.6` subdirectory with the OMNeT++ files in it.



On how to open a terminal on your Linux installation, see the chapter specific to your Linux distribution.

4.4. Environment Variables

OMNeT++ needs its `bin/` directory to be in the path. To add `bin/` to `PATH` temporarily (in the current shell only), change into the OMNeT++ directory and source the `setenv` script:

```
$ cd omnetpp-4.6
$ . setenv
```

The script also adds the `lib/` subdirectory to `LD_LIBRARY_PATH`, which may be necessary on systems that don't support the `rpath` mechanism.

To set the environment variables permanently, edit `.bashrc` in your home directory. Use your favourite text editor to edit `.bashrc`, for example `gedit`:

```
$ gedit ~/.bashrc
```

Add the following line at the end of the file, then save it:

```
export PATH=$PATH:$HOME/omnetpp-4.6/bin
```

You need to close and re-open the terminal for the changes to take effect.

Alternatively, you can put the above line into `~/.bash_profile`, but then you need to log out and log in again for the changes to take effect.



If you use a shell other than `bash`, consult the man page of that shell to find out which startup file to edit, and how to set and export variables.

Note that all Linux distributions covered in this Installation Guide use `bash` unless the user has explicitly selected another shell.

4.5. Configuring and Building OMNeT++

In the top-level OMNeT++ directory, type:

```
$ ./configure
```

The `configure` script detects installed software and configuration of your system. It writes the results into the `Makefile.inc` file, which will be read by the makefiles during the build process.


```

ubuntu@ubuntu-desktop: ~/omnest-4.0
File Edit View Terminal Tabs Help
checking for Akaroa with CFLAGS="-O2 -DNDEBUG=1 -fno-stack-protector -DXMLPAR
SER=libxml " LIBS=""... no
checking for Akaroa with CFLAGS="-O2 -DNDEBUG=1 -fno-stack-protector -DXMLPAR
SER=libxml " LIBS="-lakaroa -lfl"... no
configure: WARNING: Optional package Akaroa not found
configure: creating ./config.status
config.status: creating Makefile.inc
config.status: creating test/core/runtest
patching the ide configuration file. default workspace is: /home/ubuntu/omnest-4
.0/samples

WARNING: The configuration script could not detect the following packages:

    MPI (optional) Akaroa (optional)

Scroll up to see the warning messages (use shift+PgUp key), and see config.log
for more details. While you can use OMNEST in the current
configuration, please be aware that some functionality may be unavailable
or incomplete.

Your PATH contains /home/ubuntu/omnest-4.0/bin. Good!

TCL_LIBRARY is set. Good!
ubuntu@ubuntu-desktop:~/omnest-4.0$

```

Figure 4.1. Configuring OMNeT++

Normally, the `configure` script needs to be running under the graphical environment (X11) in order to test for `wish`, the `Tcl/Tk` shell. If you are logged in via an `ssh` session, or there is some other reason why `X` is not running, the easiest way to work around the problem is to tell OMNeT++ to build without `Tcl/Tk`. To do that, use the command

```
$ NO_TCL=1 ./configure
```

instead of plain `./configure`.



If there is an error during `configure`, the output may give hints about what went wrong. Scroll up to see the messages. (Use `Shift+PgUp`; you may need to increase the scrollback buffer size of the terminal and re-run `./configure`.) The script also writes a very detailed log of its operation into `config.log` to help track down errors. Since `config.log` is very long, it is recommended that you open it in an editor and search for phrases like *error* or the name of the package associated with the problem.

When `./configure` has finished, you can compile OMNeT++. Type in the terminal:

```
$ make
```

```

ubuntu@ubuntu-desktop: ~/omnest-4.0
File Edit View Terminal Tabs Help
g++ -c -g -Wall -fno-stack-protector -DXMLPARSER=libxml -DWITH_PARSIM -DWITH_N
ETBUILDER -I. -Ihtdocs -I/home/ubuntu/omnest-4.0/include -o out/gcc-debug//Http
Msg_m.o HttpMsg_m.cc
g++ -c -g -Wall -fno-stack-protector -DXMLPARSER=libxml -DWITH_PARSIM -DWITH_N
ETBUILDER -I. -Ihtdocs -I/home/ubuntu/omnest-4.0/include -o out/gcc-debug//NetP
kt_m.o NetPkt_m.cc
g++ -c -g -Wall -fno-stack-protector -DXMLPARSER=libxml -DWITH_PARSIM -DWITH_N
ETBUILDER -I. -Ihtdocs -I/home/ubuntu/omnest-4.0/include -o out/gcc-debug//Teln
etPkt_m.o TelnetPkt_m.cc
g++ -Wl,--export-dynamic -Wl,-rpath,/home/ubuntu/omnest-4.0/lib:. -o out/gcc-de
bug//sockets out/gcc-debug//Cloud.o out/gcc-debug//ExtHttpClient.o out/gcc-debu
g//ExtTelnetClient.o out/gcc-debug//HttpClient.o out/gcc-debug//HttpServer.o out
/gcc-debug//QueueBase.o out/gcc-debug//SocketRTScheduler.o out/gcc-debug//Telnet
Client.o out/gcc-debug//TelnetServer.o out/gcc-debug//HttpMsg_m.o out/gcc-debug/
/NetPkt_m.o out/gcc-debug//TelnetPkt_m.o -Wl,--whole-archive -Wl,--no-whole-ar
chive -L"/home/ubuntu/omnest-4.0/lib/gcc" -L"/home/ubuntu/omnest-4.0/lib" -u tk
env_lib -lopptkenvd -loppenvird -lopplayoutd -u _cmdenv_lib -loppcmdenvd -loppen
vird -loppsimd -ldl -lstc++
ln -s -f out/gcc-debug//sockets .
make[2]: Leaving directory `/home/ubuntu/omnest-4.0/samples/sockets'
make[1]: Leaving directory `/home/ubuntu/omnest-4.0'

Now you can type "omnest" to start the IDE
ubuntu@ubuntu-desktop:~/omnest-4.0$

```

Figure 4.2. Building OMNeT++



To take advantage of multiple processor cores, add the `-j2` option to the make command line.



The build process will not write anything outside its directory, so no special privileges are needed.



The make command will seemingly compile everything twice. This is because both debug and optimized versions of the libraries are built. If you only want to build one set of the libraries, specify `MODE=debug` or `MODE=release`:

```
$ make MODE=release
```

4.6. Verifying the Installation

You can now verify that the sample simulations run correctly. For example, the dyna simulation is started by entering the following commands:

```
$ cd samples/dyna
$ ./dyna
```

By default, the samples will run using the Tcl/Tk environment. You should see nice gui windows and dialogs.

4.7. Starting the IDE

You can launch the OMNeT++ Simulation IDE by typing the following command in the terminal:

```
$ omnetpp
```

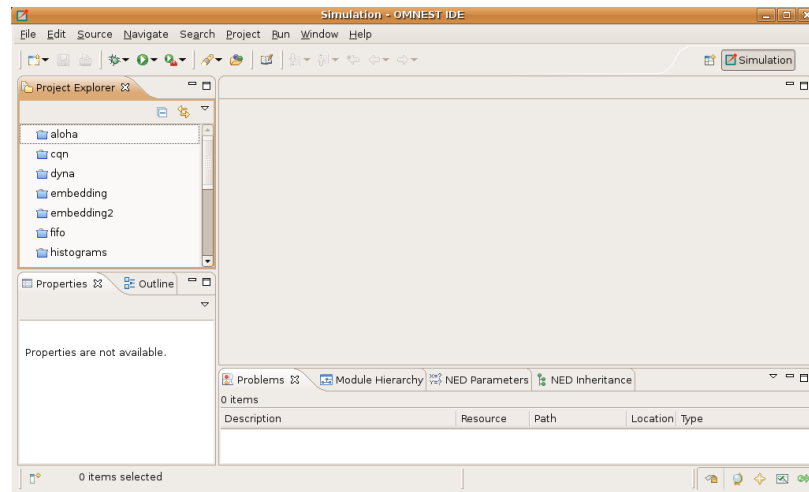


Figure 4.3. The Simulation IDE

If you would like to be able to access the IDE from the application launcher or via a desktop shortcut, run one or both of the commands below:

```
$ make install-menu-item
$ make install-desktop-icon
```

Or add a shortcut that points to the `omnetpp` program in the `ide` subdirectory by other means, for example using the Linux desktop's context menu.

4.8. Using the IDE

When you try to build a project in the IDE, you may get the following warning message:

```
Toolchain "." is not supported on this platform or installation. Please
go to the Project menu, and activate a different build configuration. (You
may need to switch to the C/C++ perspective first, so that the required
menu items appear in the Project menu.)
```

If you encounter this message, choose *Project > Properties > C/C++ Build > Tool Chain Editor > Current toolchain > GCC for OMNeT++*.

The IDE is documented in detail in the *User Guide*.

4.9. Reconfiguring the Libraries

If you need to recompile the OMNeT++ components with different flags (e.g. different optimization), then change the top-level OMNeT++ directory, edit `configure.user` accordingly, then type:

```
$ ./configure
$ make cleanall
$ make
```

If you want to recompile just a single library, then change to the directory of the library (e.g. `cd src/sim`) and type:

```
$ make clean
$ make
```

By default, libraries are compiled in both debug and release mode. If you want to make release or debug builds only, use:

```
$ make MODE=release
```

or

```
$ make MODE=debug
```

By default, shared libraries will be created. If you want to build static libraries, set `SHARED_LIBS=no` in `configure.user` and re-configure your project.



For detailed description of all options please read the *Build Options* chapter.

4.10. Additional Packages

Note that at this point, MPI, Doxygen and GraphViz have been installed as part of the prerequisites.

4.10.1. Akaroa

Linux distributions do not contain the Akaroa package. It must be downloaded, compiled and installed manually before installing OMNeT++.



As of version 2.7.9, Akaroa only supports Linux and Solaris.

Download Akaroa 2.7.9 from: http://www.cosc.canterbury.ac.nz/research/RG/net_sim/simulation_group/akaroa/download.shtml

Extract it into a temporary directory:

```
$ tar xzf akaroa-2.7.9.tar.gz
```

Configure, build and install the Akaroa library. By default, it will be installed into the `/usr/local/akaroa` directory.

```
$ ./configure
$ make
$ sudo make install
```

Go to the OMNeT++ directory, and (re-)run the `configure` script. Akaroa will be automatically detected if you installed it to the default location.

4.10.2. PCAP

The optional Pcap library allows simulation models to capture and transmit network packets bypassing the operating system's protocol stack. It is not used directly by OMNeT++, but OMNeT++ detects the necessary compiler and linker options for models in case they need it.

4.10.3. Nemiver

Nemiver is the default debugger for the OMNeT++ just-in-time debugging facility (see the `debugger-attach-on-startup` and `debugger-attach-on-error` configuration options). Nemiver can be installed via the package manager in most Linux distros. For example, on Ubuntu and other Debian-based distros you can install it by the following command:

```
$ sudo apt-get install nemiver
```

Chapter 5. Ubuntu

5.1. Supported Releases

This chapter provides additional information for installing OMNeT++ on Ubuntu Linux installations. The overall installation procedure is described in the *Linux* chapter.

The following Ubuntu releases are covered:

- Ubuntu 12.04 LTS
- Ubuntu 13.10

They were tested on the following architectures:

- Intel 32-bit and 64-bit

The instructions below assume that you use the Gnome desktop and the bash shell, which are the defaults. If you use another desktop environment or shell, you may need to adjust the instructions accordingly.

5.2. Opening a Terminal

Type *terminal* in Dash and click on the Terminal icon.

5.3. Installing the Prerequisite Packages

You can perform the installation using the graphical user interface or from the terminal, whichever you prefer.

5.3.1. Command-Line Installation

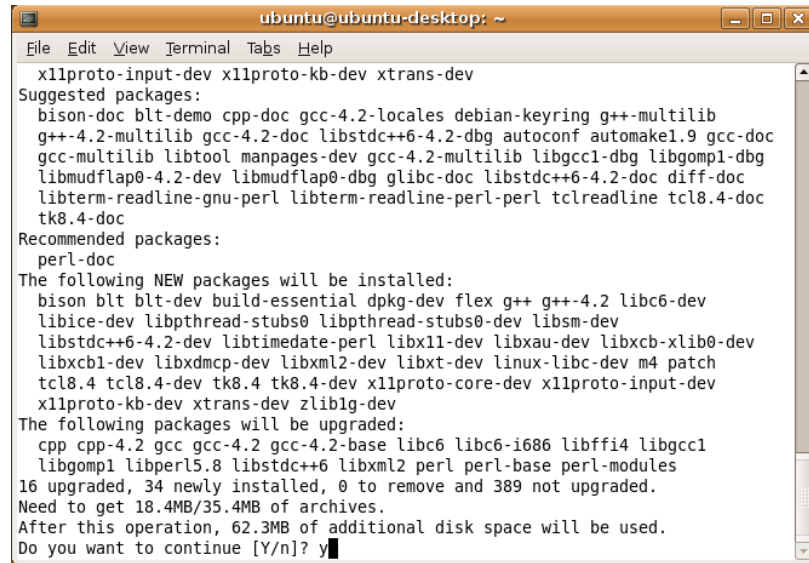
Before starting the installation, refresh the database of available packages. Type in the terminal:

```
$ sudo apt-get update
```

To install the required packages, type in the terminal:

```
$ sudo apt-get install build-essential gcc g++ bison flex perl \  
tcl-dev tk-dev libxml2-dev zlib1g-dev default-jre \  
doxygen graphviz libwebkitgtk-1.0-0 openmpi-bin \  
libopenmpi-dev libpcap-dev
```

At the confirmation questions (*Do you want to continue? [Y/N]*), answer Y.



```

ubuntu@ubuntu-desktop: ~
File Edit View Terminal Tabs Help
x11proto-input-dev x11proto-kb-dev xtrans-dev
Suggested packages:
bison-doc blt-demo cpp-doc gcc-4.2-locales debian-keyring g++-multilib
g++-4.2-multilib gcc-4.2-doc libstdc++6-4.2-dbg autoconf automake1.9 gcc-doc
gcc-multilib libtool manpages-dev gcc-4.2-multilib libgcc1-dbg libgomp1-dbg
libmudflap0-4.2-dev libmudflap0-dbg glibc-doc libstdc++6-4.2-doc diff-doc
libterm-readline-gnu-perl libterm-readline-perl-perl tclreadline tcl8.4-doc
tk8.4-doc
Recommended packages:
perl-doc
The following NEW packages will be installed:
bison blt blt-dev build-essential dpkg-dev flex g++ g++-4.2 libc6-dev
libice-dev libpthread-stubs0 libpthread-stubs0-dev libsm-dev
libstdc++6-4.2-dev libtimedate-perl libx11-dev libxau-dev libxcb-xlib0-dev
libxcb1-dev libxdmcp-dev libxml2-dev libxt-dev linux-libc-dev m4 patch
tcl8.4 tcl8.4-dev tk8.4 tk8.4-dev x11proto-core-dev x11proto-input-dev
x11proto-kb-dev xtrans-dev zlib1g-dev
The following packages will be upgraded:
cpp cpp-4.2 gcc gcc-4.2 gcc-4.2-base libc6 libc6-i686 libffi4 libgcc1
libgomp1 libperl5.8 libstdc++6 libxml2 perl perl-base perl-modules
16 upgraded, 34 newly installed, 0 to remove and 389 not upgraded.
Need to get 18.4MB/35.4MB of archives.
After this operation, 62.3MB of additional disk space will be used.
Do you want to continue [Y/n]? y

```

Figure 5.1. Command-Line Package Installation

5.3.2. Graphical Installation

Ubuntu's graphical installer, *Synaptic*, can be started with the *System > Administration > Synaptic package manager* menu item.

Since software installation requires root permissions, Synaptic will ask you to type your password.

Search for the following packages in the list, click the squares before the names, then choose *Mark for installation* or *Mark for upgrade*.

If the *Mark additional required changes?* dialog comes up, choose the *Mark* button.

The packages:

- build-essential, gcc, g++, bison, flex, perl, tcl-dev, tk-dev, libxml2-dev, zlib1g-dev, default-jre, doxygen, graphviz, libwebkitgtk-1.0-0, openmpi-bin, libopenmpi-dev, libpcap-dev

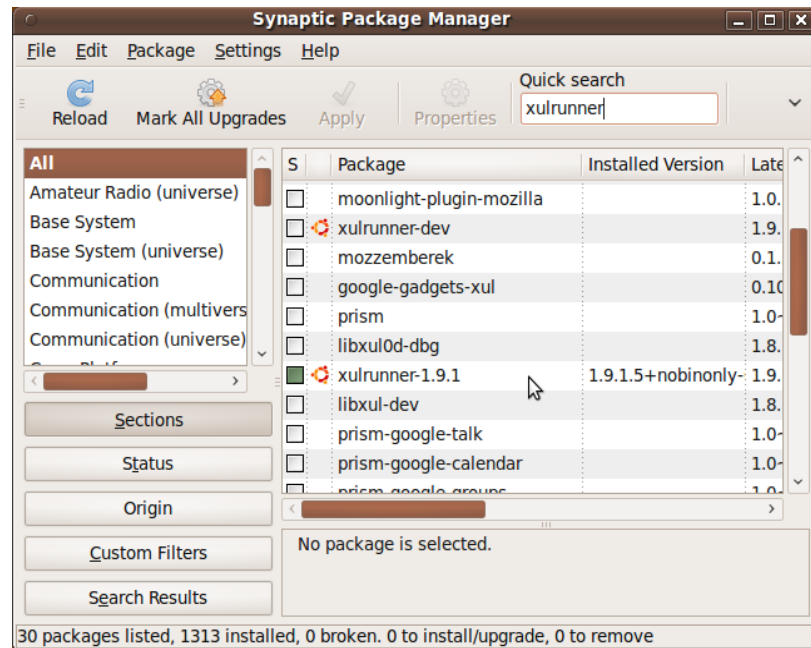


Figure 5.2. Synaptic Package Manager

Click *Apply*, then in the *Apply the following changes?* window, click *Apply* again. In the *Changes applied* window, click *Close*.

5.3.3. Post-Installation Steps

Fixing Tooltip Colors

The default tooltip background color in Ubuntu is black, which causes certain tooltips in the OMNeT++ IDE to become unreadable (black-on-black). This annoyance can be resolved by changing the tooltip colors in Ubuntu.

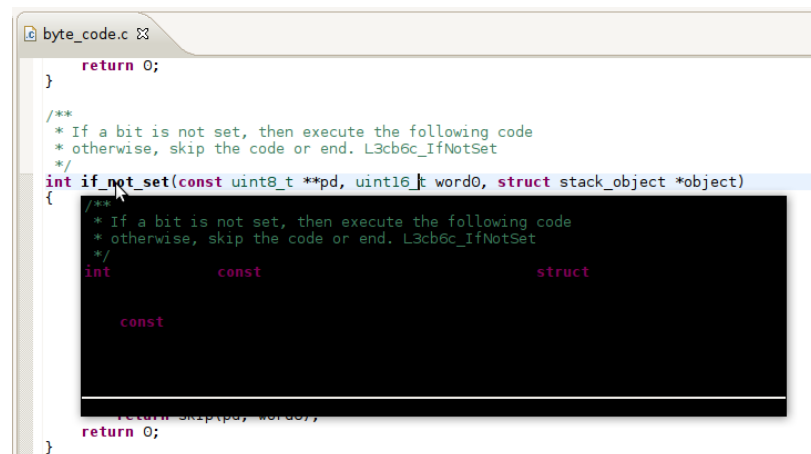


Figure 5.3. Black-on-black text in tooltips

Install *gnome-color-chooser*:

```
$ sudo apt-get install gnome-color-chooser
```

Run it:

```
$ gnome-color-chooser
```

Find the *Tooltips* group on the *Specific* tab, and change the settings to black foreground over pale yellow background. Click Apply.

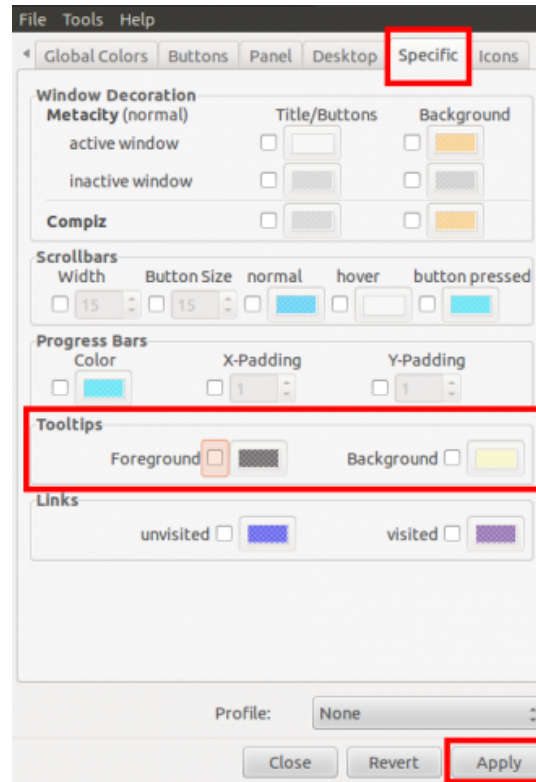


Figure 5.4. Fixing the tooltip color issue

Setting Up Debugging

By default, Ubuntu does not allow ptracing of non-child processes by non-root users. That is, if you want to be able to debug simulation processes by attaching to them with a debugger, or similar, you want to be able to use OMNeT++ just-in-time debugging (`debugger-attach-on-startup` and `debugger-attach-on-error` configuration options), you need to explicitly enable them.

To temporarily allow ptracing non-child processes, enter the following command:

```
$ echo 0 | sudo tee /proc/sys/kernel/yama/ptrace_scope
```

To permanently allow it, edit `/etc/sysctl.d/10-ptrace.conf` and change the line:

```
kernel.yama.ptrace_scope = 1
```

to read

```
kernel.yama.ptrace_scope = 0
```

Note that the default debugger for OMNeT++ just-in-time debugging is *Nemiver*, so it also needs to be installed:

```
$ sudo apt-get install nemiver
```

Chapter 6. Fedora 18

6.1. Supported Releases

This chapter provides additional information for installing OMNeT++ on Fedora installations. The overall installation procedure is described in the *Linux* chapter.

The following Fedora release is covered:

- Fedora 18

It was tested on the following architectures:

- Intel 32-bit and 64-bit

6.2. Opening a Terminal

Choose *Applications > System Tools > Terminal* from the menu.

6.3. Installing the Prerequisite Packages

You can perform the installation using the graphical user interface or from the terminal, whichever you prefer.

6.3.1. Command-Line Installation

To install the required packages, type in the terminal:

```
$ su -c 'yum install make gcc gcc-c++ bison flex perl \  
tcl-devel tk-devel libxml2-devel zlib-devel \  
java doxygen graphviz webkitgtk openmpi-devel libpcap-devel'
```

then follow the instruction on the console.

Note that *openmpi* will not be available by default, it needs to be activated in every session with the

```
$ module load openmpi-<arch>
```

command, where *<arch>* is your architecture (usually *i386* or *x86_64*). When in doubt, use `module avail` to display the list of available modules. If you need MPI in every session, you may add the `module load` command to your startup script (`.bashrc`).

6.3.2. Graphical Installation

The graphical installer can be launched by choosing *System > Administration > Add/Remove Software* from the menu.

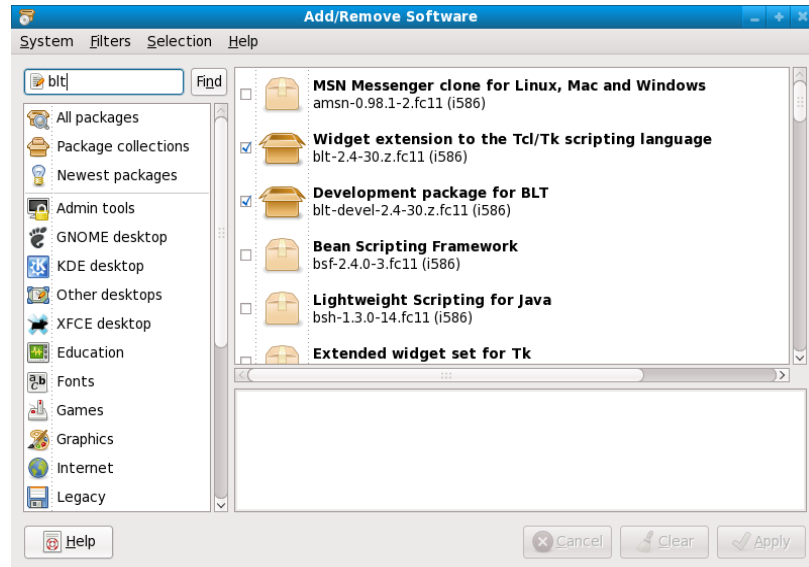


Figure 6.1. Add/Remove Software

Search for the following packages in the list. Select the checkboxes in front of the names, and pick the latest version of each package.

The packages:

- bison, gcc, gcc-c++, flex, perl, tcl-devel, tk-devel, libxml2-devel, zlib-devel, webkitgtk, make, java, doxygen, graphviz, openmpi-devel, libpcap-devel

Click *Apply*, then follow the instructions.

Chapter 7. Red Hat

7.1. Supported Releases

This chapter provides additional information for installing OMNeT++ on Red Hat Enterprise Linux installations. The overall installation procedure is described in the *Linux* chapter.

The following Red Hat release is covered:

- Red Hat Enterprise Linux Desktop Workstation 6.4

It was tested on the following architectures:

- Intel 32-bit and 64-bit

7.2. Opening a Terminal

Choose *Applications > Accessories > Terminal* from the menu.

7.3. Installing the Prerequisite Packages

You can perform the installation using the graphical user interface or from the terminal, whichever you prefer.



You will need Red Hat Enterprise Linux Desktop Workstation for OMNeT++. The *Desktop Client* version does not contain development tools.

7.3.1. Command-Line Installation

To install the required packages, type in the terminal:

```
$ su -c 'yum install make devtoolset-1.1 bison flex perl \  
tcl-devel tk-devel libxml2-devel zlib-devel \  
java doxygen graphviz openmpi-devel libpcap'
```

After installing the *devtoolset-1.1* package you must make it available to OMNeT++:

```
$ scl enable devtoolset-1.1 'bash'
```

This command will open a new shell configured to use the newest available version of the GCC toolchain. Follow the general Linux installation instructions using this shell.



Activate the *devtoolset* package in the terminal each time when you work with OMNeT++ and start the IDE from that shell.



RedHat contains two separate GCC toolchains. The *devtoolset* package contains the latest available version of GCC while the system default *gcc* and *gcc-c++* packages are using a much older version. You may opt to use the system default GCC toolchain by installing the *gcc* and *gcc-c++* packages instead of *devtools-1.1*. In this case you don't have to use the above *scl* command.

To install additional (optional) packages for parallel simulation and packet capture support, type:

```
$ su -c 'yum install openmpi-devel libpcap'
```

Note that *openmpi* will not be available by default, it needs to be activated in every session with the

```
$ module load openmpi_<arch>
```

command, where *<arch>* is your architecture (usually *i386* or *x86_64*). When in doubt, use `module avail` to display the list of available modules. If you need MPI in every session, you may add the `module load` command to your startup script (`.bashrc`).`

7.3.2. Graphical Installation

The graphical installer can be launched by choosing *Applications > Add/Remove Software* from the menu.

Search for the following packages in the list. Select the checkboxes in front of the names, and pick the latest version of each package.

The packages:

- devtoolset-1.1, bison, flex, perl, tcl-devel, tk-devel, libxml2-devel, zlib-devel, make, java, doxygen, graphviz, openmpi-devel, libpcap

Click *Apply*, then follow the instructions.

7.4. SELinux

You may need to turn off SELinux when running certain simulations. To do so, click on *System > Administration > Security Level > Firewall*, go to the *SELinux* tab, and choose *Disabled*.

You can verify the SELinux status by typing the `sestatus` command in a terminal.



From OMNeT++ 4.1 on, makefiles that build shared libraries include the `chcon -t textrel_shlib_t lib<name>.so` command that properly sets the security context for the library. This should prevent the SELinux-related "*cannot restore segment prot after reloc: Permission denied*" error from occurring, unless you have a shared library which was built using an obsolete or hand-crafted makefile that does not contain the `chcon` command.

Chapter 8. OpenSUSE

8.1. Supported Releases

This chapter provides additional information for installing OMNeT++ on openSUSE installations. The overall installation procedure is described in the *Linux* chapter.

The following openSUSE release is covered:

- openSUSE 12.3

It was tested on the following architectures:

- Intel 32-bit and 64-bit

8.2. Opening a Terminal

Choose *Applications > System > Terminal > Terminal* from the menu.

8.3. Installing the Prerequisite Packages

You can perform the installation using the graphical user interface or from the terminal, whichever you prefer.

8.3.1. Command-Line Installation

To install the required packages, type in the terminal:

```
$ sudo zypper install make gcc gcc-c++ bison flex perl \  
    tcl-devel tk-devel libxml2-devel zlib-devel \  
    java-1_7_0-openjdk doxygen graphviz openmpi-devel libpcap-devel \  
    libwebkitgtk-1_0-0
```

then follow the instruction on the console.

Note that *openmpi* will not be available by default, first you need to log out and log in again, or source your *.profile* script:

```
$ . ~/.profile
```

8.3.2. Graphical Installation

The graphical installer can be launched by choosing *Computer > Yast > System > Software > Software Management* from the menu.

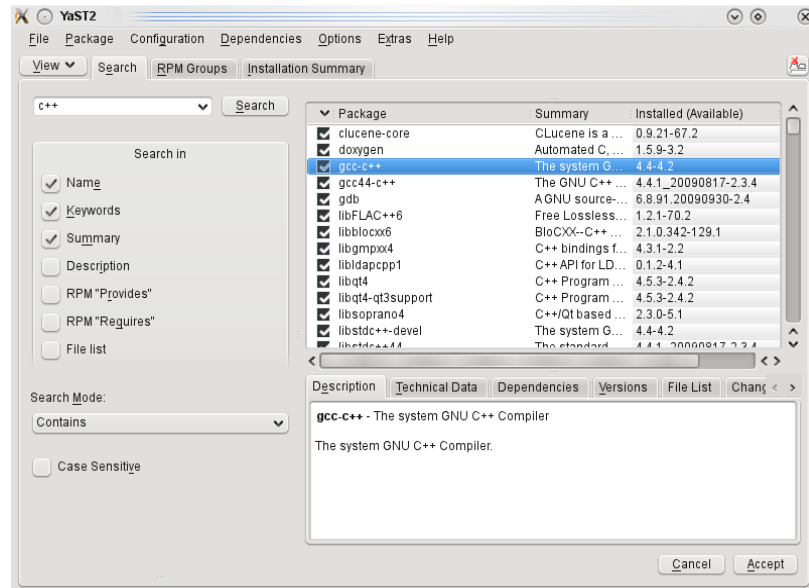


Figure 8.1. Yast Software Management

Search for the following packages in the list. Select the checkboxes in front of the names, and pick the latest version of each package.

The packages:

- make, gcc, gcc-c++, bison, flex, perl, tcl-devel, tk-devel, libxml2-devel, zlib-devel, java-1_7_0-openjdk, doxygen, graphviz, libwebkitgtk-1_0-0, openmpi-devel, libpcap-devel

Click *Accept*, then follow the instructions.

Chapter 9. Generic Unix

9.1. Introduction

This chapter provides additional information for installing OMNeT++ on Unix-like operating systems not specifically covered by this Installation Guide. The list includes FreeBSD, Solaris, and Linux distributions not covered in other chapters.



In addition to Windows and Mac OS X, the Simulation IDE will only work on Linux x86 32/64-bit platforms. Other operating systems (FreeBSD, Solaris, etc.) and architectures may still be used as simulation platforms, without the IDE.

9.2. Dependencies

The following packages are required for OMNeT++ to work:

build-essential, GNU make, gcc, g++, bison (2.x+), flex, perl

These packages are needed for compiling OMNeT++ and simulation models, and also for certain OMNeT++ tools to work. Some C++ compilers other than g++, for example the Intel compiler, will also be accepted.

The following packages are strongly recommended, because their absence results in severe feature loss:

Tcl/Tk 8.5 or later

Required by the Tkenv simulation runtime environment. You need the *devel* packages that include the C header files as well. It is also possible to compile OMNeT++ without Tcl/Tk (and Tkenv), by turning on the `NO_TCL` environment variable.

LibXML2 or Expat

Either one of these XML parsers are needed for OMNeT++ to be able to read XML files. The *devel* packages (that include the header files) are needed. LibXML2 is the preferred one.

SUN JRE or OpenJDK, version 7.0 or later

The Java runtime is required to run the Eclipse-based Simulation IDE. Other implementations, for example Kaffe, have been found to have problems running the IDE. You do not need this package if you do not plan to use the Simulation IDE.

xulrunner

This package is part of Firefox, and is needed by the IDE to display documentation, styled tooltips and other items.

The following packages are required if you want to take advantage of some advanced OMNeT++ features:

GraphViz, Doxygen

These packages are used by the NED documentation generation feature of the IDE. When they are missing, documentation will have less content.

MPI	openmpi or some other MPI implementation is required to support parallel simulation execution.
Akaroa	Implements Multiple Replications In Parallel (MRIP). Akaroa can be downloaded from the project's website.
Pcap	Allows simulation models to capture and transmit network packets bypassing the operating system's protocol stack. It is not used directly by OMNeT++, but OMNeT++ detects the necessary compiler and linker options for models in case they need it.

The exact names of these packages may differ across distributions.

9.3. Determining Package Names

If you have a distro unrelated to the ones covered in this Installation Guide, you need to figure out what is the established way of installing packages on your system, and what are the names of the packages you need.

9.3.1. Tcl/Tk

Tcl/Tk may be present as separate packages (`tcl` and `tk`), or in one package (`tcltk`). The version number (e.g. 8.5) is usually part of the name in some form (85, 8.5, etc). You will need the development packages, which are usually denoted with the `-dev` or `-devel` name suffix.

Troubleshooting:

If your platform does not have suitable Tcl/Tk packages, you may still use OMNeT++ to run simulations from the command line. To disable the graphical runtime environment use:

```
$ NO_TCL=yes ./configure
```

This will prevent the build system to link with Tcl/Tk libraries. This is required also if you are installing OMNeT++ from a remote terminal session.

By default, the `configure` script expects to find the Tcl/Tk libraries in the standard linker path (without any `-Ldirectory` linker option) and under the standard names (i.e. with the `-ltcl8.4` or `-ltcl84` linker option). If you have them in different places or under different names, you have to edit `configure.user` and explicitly set `TK_LIBS` there (see the Build Options chapter for further details).

If you get the error *no display and DISPLAY environment variable not set*, then you're either not running X (the `wish` command, and thus `./configure` won't work just in the console) or you really need to set the `DISPLAY` variable (`export DISPLAY=:0.0` usually does it).

If you get the error: *Tcl_Init failed: Can't find a usable init.tcl...*

The `TCL_LIBRARY` environment variable should point to the directory which contains `init.tcl`. That is, you probably want to put a line like

```
export TCL_LIBRARY=/usr/lib/tcl8.4
```

into your `~/.bashrc`.

If you still have problems installing Tcl/Tk, we recommend visiting the OMNeT++ site's wiki packages for further troubleshooting tips: <http://www.omnetpp.org/pmwiki/index.php?n=Main.TclTkRelatedProblems>

9.3.2. The Java Runtime

You need to install the Oracle JRE or OpenJDK. The IDE is not supported on Unix platforms other than Linux, so JRE is not required either. We have tested various other Java runtimes (*gcj*, *kaffe*, etc.), and the IDE does not work well with them.

Java version 6.0 (i.e. JRE 1.6) or later is required and 7.0 is recommended.

9.3.3. MPI

OMNeT++ is not sensitive to the particular MPI implementation. You may use OpenMPI, or any other standards-compliant MPI package.

9.4. Downloading and Unpacking

Download OMNeT++ from <http://omnetpp.org>. Make sure you select to download the generic archive, `omnetpp-4.6-src.tgz`.

Copy the archive to the directory where you want to install it. This is usually your home directory, `/home/<you>`. Open a terminal, and extract the archive using the following command:

```
$ tar xvfz omnetpp-4.6-src.tgz
```

This will create an `omnetpp-4.6` subdirectory with the OMNeT++ files in it.

9.5. Environment Variables

In general OMNeT++ requires that its bin directory should be in the PATH. You should add a line something like this to your `.bashrc`:

```
$ export PATH=$PATH:$HOME/omnetpp-4.6/bin
```

You may also have to specify the path where shared libraries are loaded from. Use:

```
$ export LD_LIBRARY_PATH=$LD_LIBRARY_PATH:$HOME/omnetpp-4.6/lib
```

If `configure` complains about not finding the Tcl library directory, you may specify it by setting the `TCL_LIBRARY` environment variable.



If you use a shell other than bash, consult the man page of that shell to find out which startup file to edit, and how to set and export variables.

9.6. Configuring and Building OMNeT++

In the top-level OMNeT++ directory, type:

```
$ ./configure
```

The `configure` script detects installed software and configuration of your system. It writes the results into the `Makefile.inc` file, which will be read by the makefiles during the build process.

```

ubuntu@ubuntu-desktop: ~/omnest-4.0
File Edit View Terminal Tabs Help
checking for Akaroa with CFLAGS="-O2 -DNDEBUG=1 -fno-stack-protector -DXMLPAR
SER=libxml " LIBS=""... no
checking for Akaroa with CFLAGS="-O2 -DNDEBUG=1 -fno-stack-protector -DXMLPAR
SER=libxml " LIBS="-lakarua -lfl"... no
configure: WARNING: Optional package Akaroa not found
configure: creating ./config.status
config.status: creating Makefile.inc
config.status: creating test/core/runtest
patching the ide configuration file. default workspace is: /home/ubuntu/omnest-4
.0/samples

WARNING: The configuration script could not detect the following packages:

    MPI (optional) Akaroa (optional)

Scroll up to see the warning messages (use shift+PgUp key), and see config.log
for more details. While you can use OMNEST in the current
configuration, please be aware that some functionality may be unavailable
or incomplete.

Your PATH contains /home/ubuntu/omnest-4.0/bin. Good!

TCL_LIBRARY is set. Good!
ubuntu@ubuntu-desktop:~/omnest-4.0$

```

Figure 9.1. Configuring OMNeT++

Normally, the `configure` script needs to be running under the graphical environment (X11) in order to test for `wish`, the `Tcl/Tk` shell. If you are logged in via an `ssh` session, or there is some other reason why `X` is not running, the easiest way to work around the problem is to tell OMNeT++ to build without `Tcl/Tk`. To do that, use the command

```
$ NO_TCL=1 ./configure
```

instead of plain `./configure`.



If there is an error during `configure`, the output may give hints about what went wrong. Scroll up to see the messages. (Use `Shift+PgUp`; you may need to increase the scrollback buffer size of the terminal and re-run `./configure`.) The script also writes a very detailed log of its operation into `config.log` to help track down errors. Since `config.log` is very long, it is recommended that you open it in an editor and search for phrases like *error* or the name of the package associated with the problem.

The `configure` script tries to build and run small test programs that are using specific libraries or features of the system. You can check the `config.log` file to see which test program has failed and why. In most cases the problem is that the script cannot figure out the location of a specific library. Specifying the include file or library location in the `configure.user` file and then re-running the `configure` script usually solves the problem.

When `./configure` has finished, you can compile OMNeT++. Type in the terminal:

```
$ make
```

```

ubuntu@ubuntu-desktop: ~/omnest-4.0
File Edit View Terminal Tabs Help
g++ -c -g -Wall -fno-stack-protector -DXMLPARSER=libxml -DWITH_PARSIM -DWITH_N
ETBUILDER -I. -Ihtdocs -I/home/ubuntu/omnest-4.0/include -o out/gcc-debug//Http
Msg_m.o HttpMsg_m.cc
g++ -c -g -Wall -fno-stack-protector -DXMLPARSER=libxml -DWITH_PARSIM -DWITH_N
ETBUILDER -I. -Ihtdocs -I/home/ubuntu/omnest-4.0/include -o out/gcc-debug//NetP
kt_m.o NetPkt_m.cc
g++ -c -g -Wall -fno-stack-protector -DXMLPARSER=libxml -DWITH_PARSIM -DWITH_N
ETBUILDER -I. -Ihtdocs -I/home/ubuntu/omnest-4.0/include -o out/gcc-debug//Teln
etPkt_m.o TelnetPkt_m.cc
g++ -Wl,--export-dynamic -Wl,-rpath,/home/ubuntu/omnest-4.0/lib:. -o out/gcc-de
bug//sockets out/gcc-debug//Cloud.o out/gcc-debug//ExtHttpClient.o out/gcc-debu
g//ExtTelnetClient.o out/gcc-debug//HttpClient.o out/gcc-debug//HttpServer.o out
/gcc-debug//QueueBase.o out/gcc-debug//SocketRTScheduler.o out/gcc-debug//Telnet
Client.o out/gcc-debug//TelnetServer.o out/gcc-debug//HttpMsg_m.o out/gcc-debug/
/NetPkt_m.o out/gcc-debug//TelnetPkt_m.o -Wl,--whole-archive -Wl,--no-whole-ar
chive -L"/home/ubuntu/omnest-4.0/lib/gcc" -L"/home/ubuntu/omnest-4.0/lib" -u tk
env_lib -lopptkenvd -loppenvird -lopplayoutd -u _cmdenv_lib -loppcmdenvd -loppen
vird -loppsimd -ldl -lstc++
ln -s -f out/gcc-debug//sockets .
make[2]: Leaving directory `/home/ubuntu/omnest-4.0/samples/sockets'
make[1]: Leaving directory `/home/ubuntu/omnest-4.0'

Now you can type "omnest" to start the IDE
ubuntu@ubuntu-desktop:~/omnest-4.0$

```

Figure 9.2. Building OMNeT++



To take advantage of multiple processor cores, add the `-j2` option to the make command line.



The build process will not write anything outside its directory, so no special privileges are needed.



The make command will seemingly compile everything twice. This is because both debug and optimized versions of the libraries are built. If you only want to build one set of the libraries, specify `MODE=debug` or `MODE=release`:

```
$ make MODE=release
```

9.7. Verifying the Installation

You can now verify that the sample simulations run correctly. For example, the dyna simulation is started by entering the following commands:

```
$ cd samples/dyna
$ ./dyna
```

By default, the samples will run using the Tcl/Tk environment. You should see nice gui windows and dialogs.

9.8. Starting the IDE



The IDE is supported only on Windows, Mac OS X (x86) and Linux (x86,x64).

You can run the IDE by typing the following command in the terminal:

```
$ omnetpp
```

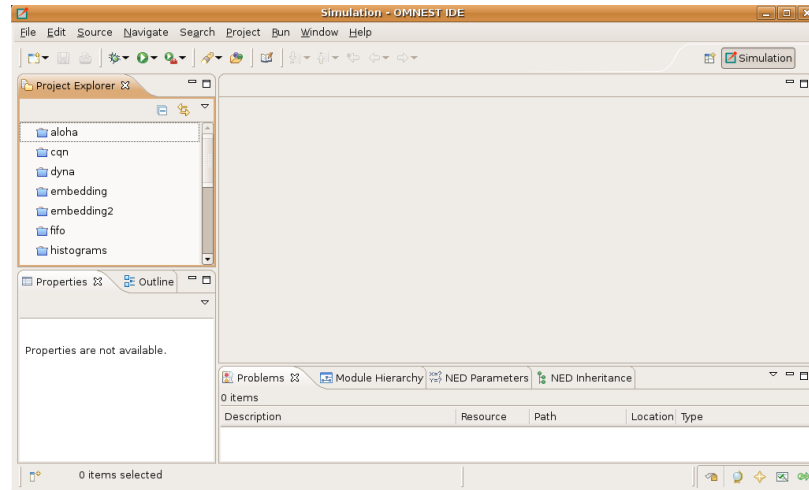


Figure 9.3. The Simulation IDE

If you would like to be able to access the IDE from the application launcher or via a desktop shortcut, run one or both of the commands below:

```
$ make install-menu-item
$ make install-desktop-icon
```



The above commands assume that your system has the `xdg` commands, which most modern distributions do.

9.9. Optional Packages

9.9.1. Akaroa

If you wish to use Akaroa, it must be downloaded, compiled, and installed manually before installing OMNeT++.



As of version 2.7.9, Akaroa only supports Linux and Solaris.

Download Akaroa 2.7.9 from: http://www.cosc.canterbury.ac.nz/research/RG/net_sim/simulation_group/akaroa/download.html

Extract it into a temporary directory:

```
$ tar xzf akaroa-2.7.9.tar.gz
```

Configure, build and install the Akaroa library. By default, it will be installed into the `/usr/local/akaroa` directory.

```
$ ./configure
$ make
$ sudo make install
```

Go to the OMNeT++ directory, and (re-)run the `configure` script. Akaroa will be automatically detected if you installed it to the default location.

9.9.2. PCAP

The optional Pcap library allows simulation models to capture and transmit network packets bypassing the operating system's protocol stack. It is not used directly by

OMNeT++, but OMNeT++ detects the necessary compiler and linker options for models in case they need it.

Chapter 10. Build Options

10.1. Configure.user Options

The `configure.user` file contains several options that can be used to fine-tune the simulation libraries.

You always need to re-run the `configure` script in the installation root after changing the `configure.user` file.

```
$ ./configure
```

After this step, you have to remove all previous libraries and recompile OMNeT++:

```
$ make cleanall
$ make
```

Options:

<code>USE_NAMESPACE=no</code>	Turning on this option will place all OMNeT++ APIs into the <code>omnetpp</code> namespace to prevent name collisions with other libraries. After that, models must be updated to either import the namespace or use qualified names. To compile unmodified models, use <code>-DAUTOIMPORT_NAMESPACE</code> in the compiler flags (CFLAGS).
<code>PREFER_CLANG=no</code>	If both <code>gcc</code> and <code>clang</code> are installed on your system, setting this variable to <code>yes</code> will force the <code>configure</code> script to use <code>clang</code> as C++ compiler.
<code>USE_CXX11=yes</code>	By default OMNeT++ is configured to use C++11 language features. This can be disabled if your model is not yet compatible with C++11. Future OMNeT++ versions may require C++11, so it is strongly recommended to update your models as soon as possible.
<code><COMPONENTNAME>_CFLAGS,</code> <code><COMPONENTNAME>_LIBS</code>	The <code>configure.user</code> file contains variables for defining the compile and link options needed by various external libraries. By default, the <code>configure</code> command detects these automatically, but you may override the auto detection by specifying the values by hand. (e.g. <code><COMP>_CFLAGS=-I/path/to/comp/includedir</code> and <code><COMP>_LIBS=-L/path/to/comp/libdir -lnameoflib</code> .)
<code>WITH_PARSIM=no</code>	Use this variable to explicitly disable parallel simulation support in OMNeT++.
<code>WITH_NETBUILDER=no</code>	This option allows you to leave out the NED language parser and the network builder. (This is needed only if you are building your network with C++ API calls and you do not use the built-in NED language parser at all.)

NO_TCL=yes	This will prevent the build system to link with Tcl/Tk libraries. Use this option if your platform does not have a suitable Tcl/Tk package and you will run the simulation only in command line mode. (i.e. You want to run OMNeT++ in a remote terminal session.)
EMBED_TCL_CODE=no	Tcl/Tk is a script language and the source of the graphical runtime environment is stored as .tcl files in the <code>src/tkenv</code> directory. By default, these files are not used directly, but are embedded as string literals in the executable file. Setting <code>EMBED_TCL_CODE=yes</code> allows you to move the OMNeT++ installation without caring about the location of the .tcl files. If you want to make changes to the Tcl code, you better switch off the embedding with the <code>EMBED_TCL_CODE=no</code> option. This way you can make changes to the .tcl files and see the changes immediately without recompiling the OMNeT++ libraries.
CFLAGS_[RELEASE/DEBUG]	To change the compiler command line options the build process is using, you should specify them in the <code>CFLAGS_RELEASE</code> and <code>CFLAGS_DEBUG</code> variables. By default, the flags required for debugging or optimization are detected automatically by the <code>configure</code> script. If you set them manually, you should specify all options you need. It is recommended to check what options are detected automatically (check the <code>Makefile.inc</code> after running <code>configure</code> and look for the <code>CFLAGS_[RELEASE/DEBUG]</code> variables.) and add/modify those options manually in the <code>configure.user</code> file.
LDFLAGS	Linker command line options can be explicitly set using this variable. It is recommended to check what options are detected automatically (check the <code>Makefile.inc</code> after running <code>configure</code> and look for the <code>LDFLAGS</code> variable.) and add/modify those options manually in the <code>configure.user</code> file.
SHARED_LIBS	This variable controls whether the OMNeT++ build process will create static or dynamic libraries. By default, the OMNeT++ runtime is built as a set of shared libraries. If you want to build a single executable from your simulation, specify <code>SHARED_LIBS=no</code> in <code>configure.user</code> to create static OMNeT++ libraries and then reconfigure (<code>./configure</code>) and recompile OMNeT++ (<code>make cleanall; make</code>). Once the OMNeT++ static libraries are correctly built, your own project have to be rebuilt, too. You will get a single, statically linked executable, which requires only the NED and INI files to run.



It is important to completely delete the OMNeT++ libraries (`make cleanall`) and then rebuild them, otherwise it cannot be guaranteed that the created simulations are linked against the correct libraries.

The following symbols can be defined for the compiler if you need backward compatibility with some older OMNeT++ 3.x features. They should be specified on the compiler command line using the `-DSYMBOLNAME` syntax. You can add these options to the `CFLAGS_RELEASE` or `CFLAGS_DEBUG` variables (e.g. `CFLAGS_RELEASE='-O2 -DNDEBUG=1 -DSYMBOLNAME'`).

<code>USE_DOUBLE_SIMTIME</code>	OMNeT++ 3.x used <code>double</code> as the type for simulation time. In OMNeT++ 4.0 and later, the simulation time is a fixed-point number based on a 64-bit integer. If you want to work with <code>double</code> simulation time for some reason (e.g. during porting an OMNeT++ 3.x model), define the <code>USE_DOUBLE_SIMTIME</code> symbol for the compiler.
<code>WITHOUT_CPACKET</code>	In OMNeT++ 3.x, methods and data related to the modeling of network packets were included in the <code>cMessage</code> class. For these parameters, OMNeT++ 4.x has a new class called <code>cPacket</code> (derived from <code>cMessage</code>). If you want get back the old behavior (i.e. having a single <code>cMessage</code> class only), define the <code>WITHOUT_CPACKET</code> symbol.

10.2. Moving the Installation

When you build OMNeT++ on your machine, several directory names are compiled into the binaries. This makes it easier to set up OMNeT++ in the first place, but if you rename the installation directory or move it to another location in the file system, the built-in paths become invalid and the correct paths have to be supplied via environment variables.

The following environment variables are affected (in addition to `PATH`, which also needs to be adjusted):

<code>OMNETPP_IMAGE_PATH</code>	This variable contains the list of directories where Tkenv looks for icons. Set it to point to the <code>images/</code> subdirectory of your OMNeT++ installation.
<code>OMNETPP_TKENV_DIR</code>	This variable points to the directory that contains the Tcl script parts of Tkenv, which is by default the <code>src/tkenv/</code> subdirectory of your OMNeT++ installation. Normally you don't need to set this variable, because the Tkenv shared library contains all Tcl code compiled in as string literals. However, if you compile OMNeT++ with the <code>EMBED_TCL_CODE=no</code> setting and then you move the installation, then you need to set <code>OMNETPP_TKENV_DIR</code> , otherwise Tkenv won't start.
<code>LD_LIBRARY_PATH</code>	This variable contains the list of additional directories where shared libraries are looked for. Initially, <code>LD_LIBRARY_PATH</code> is not needed because shared libraries are located via the <code>rpath</code> mechanism. When you move the installation, you need to add the <code>lib/</code> subdirectory of your OMNeT++ installation to <code>LD_LIBRARY_PATH</code> .



On Mac OS X, `DYLD_LIBRARY_PATH` is used instead of `LD_LIBRARY_PATH`. On Windows, the `PATH` variable must contain the directory where shared libraries (DLLs) are present.

10.3. Using Different Compilers

By default, the configure script detects the following compilers automatically in the path:

- Intel compiler (icc, icpc)
- GNU C/C++ (gcc, g++)
- Clang (clang, clang++)
- Sun Studio (cc, cxx)
- IBM compiler (xlc, xlc)

If you want to use compilers other than the above ones, you should specify the compiler name in the `CC` and `CXX` variables, and re-run the configuration script.



Different compilers may have different command line options. If you use a compiler other than the default `gcc`, you may have to revise the `CFLAGS_[RELEASE/DEBUG]` and `LDFLAGS` variables.